

# Overview of the voluntary, community and social enterprise (VCSE) sector in West Yorkshire

## Impact in 4 key areas



Personal health  
Direct support on disability and mental and physical health issues.



Personal wellbeing  
Training, education and life skills that create resilience, and add to social capital.



Financial security  
Better access to benefits, basic services, paid work and other routes out of poverty.



Community wellbeing  
Cohesion, ownership, pride and inclusion. Good physical and cultural environment and facilities.

It's probably bigger than you think

### Approx 14,900 organisations

6,700 unregistered 5,200 registered



That's 2.3 organisations for every 1,000 people

The mutual aid groups that did so much during the Covid-19 pandemic are examples of unregistered groups.

This estimate is based on the most detailed study to date.

### It's larger than finance/insurance

VCSE sector organisations make up about 3.4% of all businesses. About the same size as the information and communication industries.

### Most organisations are financially stable

Data collected in 2019 showed 24% of organisations had rising income, 62% were stable and 14% were reducing.

The bulk of the sector (the smaller organisations) keep going on relatively low levels of income. Much of their energy comes from volunteers.



### Not evenly distributed

in terms of place or communities of interest or practice.



This means some people are better served than others.

### It's organic rather than a designed, unified system

The sector addresses a wide range of issues, many of which are unrecognised or ignored.

Proudly independent from the state, it focuses on creating social, cultural or environmental value rather than profit.

Often working in complementary ways, the sector uses its skills, experience, ideas, beliefs, resources and ambitions to create **a unique energy**.

This is an overview of the independent report:

**The structure, dynamics and impact of the voluntary, community and social enterprise sector** by Tony Chapman, Professor of Policy and Practice at Durham University.

See the Harnessing the Power of Communities section at [www.wyhpартnership.co.uk](http://www.wyhpартnership.co.uk)

## Volunteers are vital

121,000 volunteers

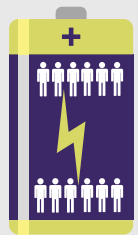
giving at least

8.7 million hours

is worth

up to **£118.4 million**

Adds between 6.7 and 10.5 per cent to sector income



## Valuing it as a whole...

A new way of looking at the sector's value

### Economic value

Directly measurable: **£ 1.4 billion**

Added value of up to: **£ 2.6 billion**

### Social value

Wider benefits to society: **£ 1.4 billion**

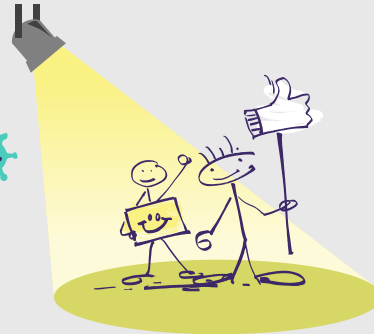
### Total estimated value of the sector:

**£ 5.4 billion**

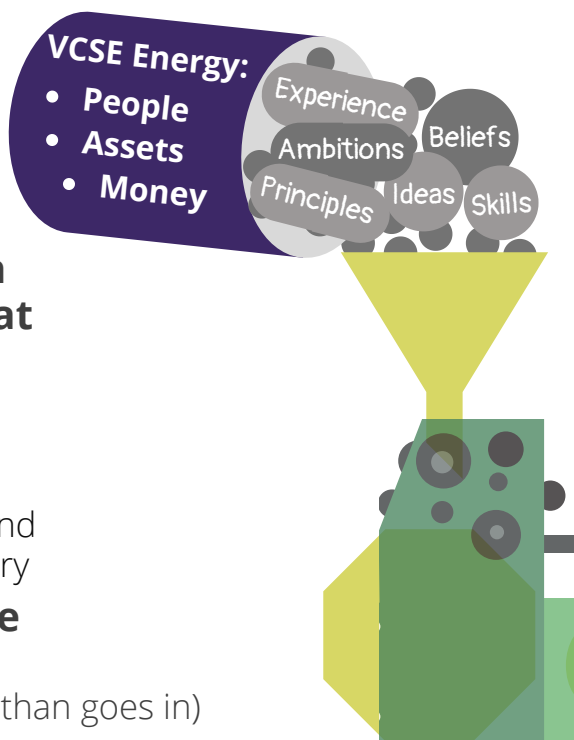
# What is the value of the VCSE sector in West Yorkshire?

## When the Covid-19 pandemic arrived

The VCSE sector stepped up and delivered



This happens day in, day out (on a smaller scale).



### This approach recognises that the sector is:

- varied
- autonomous
- ambitious
- cooperative and complementary

### And that value accumulates

(more comes out than goes in)

#### Added value includes

1. Public sector savings
2. Economic multipliers (the ripple effect)
3. Benefits of using the sector's services (personal recovery, employment, independence etc).

#### Social value includes

1. Stronger communities
2. Better quality of life
3. Latent capacity (eg sector's response to Covid-19).

### Social and economic impact



Direct support on disability and mental and physical health issues.



Training, education and life skills that create confidence, resilience and add to social capital.



Better access to basic services, benefits, paid work and other routes out of poverty.



Cohesion, ownership pride and inclusion. Good physical and cultural environment and facilities.

### Economic value

Directly measurable

**£ 1.4 billion**

Added value of up to

**£ 2.6 billion**

### Social value

Wider benefits to society

**£ 1.4 billion**

**Total estimated value of the sector is**

**£ 5.4 billion**

# Volunteering and employment in the VCSE sector in West Yorkshire

**29,700** employees delivering **49 million** working hours a year  
3.6% of all employees

Wages use 68% of sector income  
£



## Volunteers are essential

Nearly 80% of sector could not survive without them

Smaller organisations need volunteers most (often have none/few staff).  
But reliance still high amongst largest organisations.

The sector generally wants people who can

volunteer regularly

bring skills and knowledge

work independently



## PEOPLE POWER



**121,000** volunteers\* giving at least **8.7 million hours** a year is worth up to **£118.4 million** (adds between 6.7 and 10.5 per cent to sector income)

- \*This figure does not include volunteers who:
- give time directly to NHS or council services
  - act as school governors or classroom help
  - are special constables or magistrates
  - take part in national appeals such as Comic Relief and Children in Need



## Data on diversity is sparse

Relatively few CEOs and chairs are people with registered disabilities and/or Black, Asian or from minority ethnic populations.

**"We need to work together to eliminate the diversity problem at the source."**

**ACEVO - sector leadership organisation**

# Volunteering and employment in the VCSE sector in West Yorkshire

**29,700** employees delivering **49 million** working hours a year  
3.6% of all employees

Wages use 68% of sector income  
£



## Volunteers are essential

Nearly 80% of sector could not survive without them

Smaller organisations need volunteers most (they often have none or few staff).

But reliance still high amongst largest organisations.

The sector generally wants people who can



# PEOPLE POWER

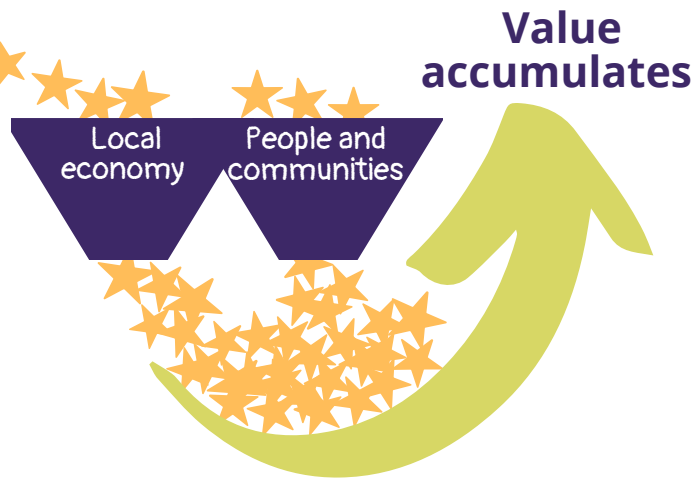
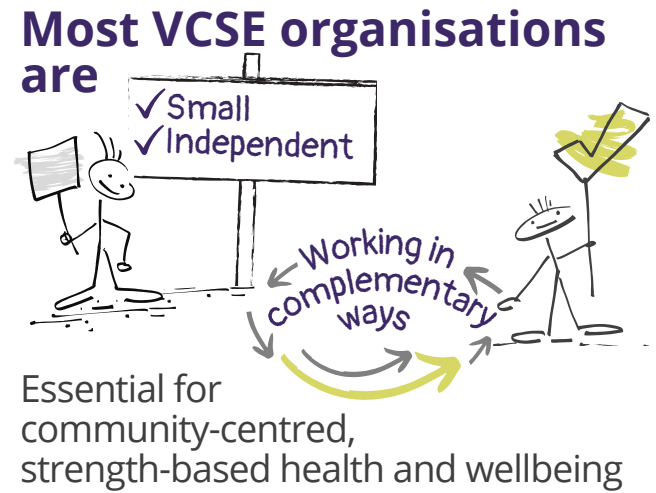
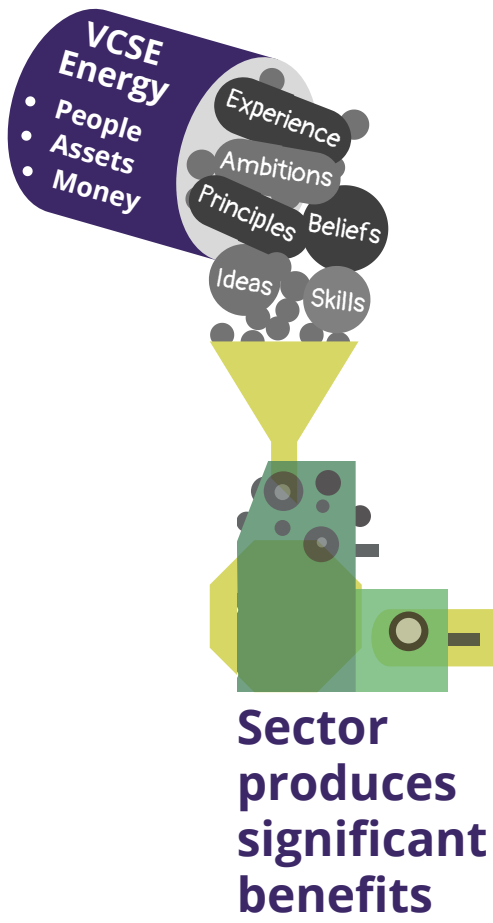


**121,000** volunteers giving at least **8.7 million hours** a year  
adds between 6.7 and 10.5 % to sector income  
**That's worth up to £118.4 million**

# Valuing the Voluntary, Community and Social Enterprise sector (VCSE)

The sector is **healthy** and **resilient**

person-centred  
 agile trusted able  
 meets needs



## Working well together:

**Creating a clear vision**

**Investing in the sector's strengths**

**Trusting organisations as partners**